

Fusion

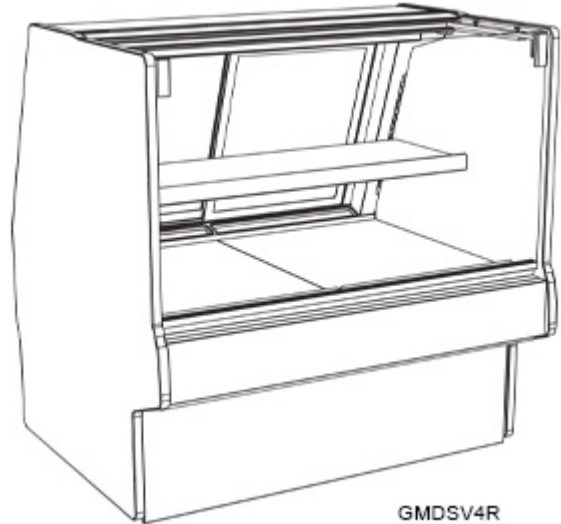
GMDSV 52"H Refrigerated Service Case

Structural Concepts®

(Lengths do not include 1-1/8" end panels)

- GMDSV3R 36-3/4"L x 43"D x 51-5/8"H
 - GMDSV4R 48-3/4"L x 43"D x 51-5/8"H
 - GMDSV5R 60-5/8"L x 43"D x 51-5/8"H
 - GMDSV6R 73-1/8"L x 43"D x 51-5/8"H
 - GMDSV8R 97-1/2"L x 43"D x 51-5/8"H
 - GMDSV10R 121-1/8"L x 43"D x 51-5/8"H
 - GMDSV12R 146-1/4"L x 43"D x 51-5/8"H
- Included**

- Integrated average product temperature of 40°F or less
- LED top & shelf lights
- One year parts & labor; 5 year compressor warranty
- Remote DX refrigeration
- Stainless steel rear exterior
- Vertical, UV bonded lift-up front glass w/o lock



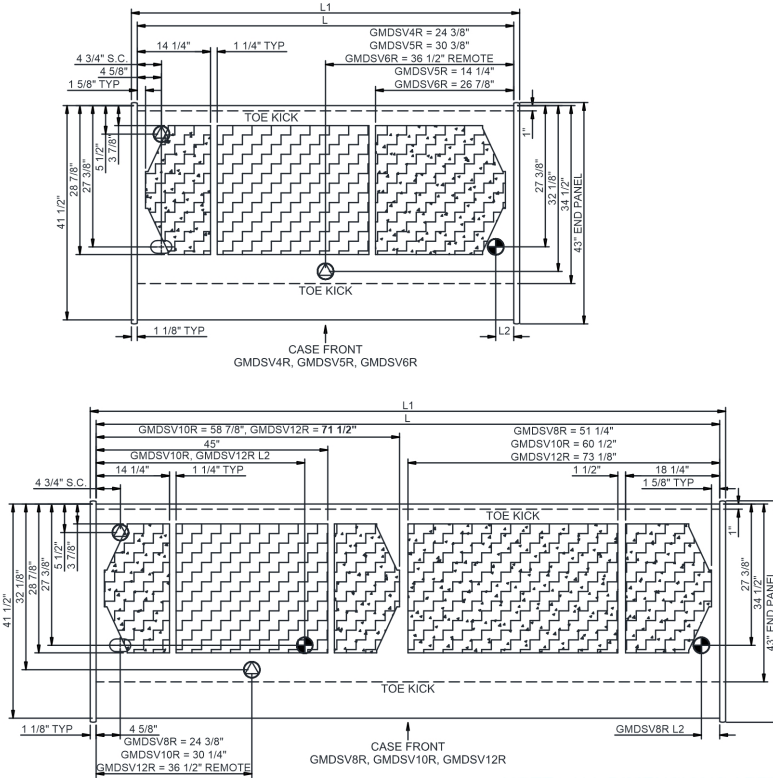
Specify	Standard Features	Additional Options
EXTERIOR COLOR	• Powder coated (stock colors, specify RAL#)	• Laminate - Standard colors • Stainless steel
INTERIOR COLOR	• Black powder coated	• Stainless steel
LOWER FRONT PANEL COLOR	• Black powder coated	• Stainless steel
TRIM COLOR	• Black	• Silver
BASE	• Rail system for shims (remote)	• Casters w/ levelers (self-cont.)
BUMPER FRONT	• 1" Boston bumper (specify color)	• 1" Stainless steel plate rail bumper
END PANELS	• None (specify per line-up)	• Cutaway w/ glass (LH / RH) • End bumper (LH / RH) • Full w/stainless steel interior (LH / RH)
SCALE STAND	• None	¹ • Scale stand w/ receptacle & CAT5 (specify location) • Scale stand w/ receptacle (specify location)
UPPER REAR	• Clear glass rear sliding doors	• Reflective glass rear sliding doors
PRICE TAG MOLDING	• None	• 1" Price tag molding (black or silver) • Universal price tag molding (clear w/ open top)
SHELVING	• 16" Solid shelf	• 14" & 16" Solid shelving • 14" & 20" Solid shelving
LIGHTS	• LED 3500K w/ frosted lens	• LED 4000K w/ frosted lens • LED nose light
ELECTRICAL CONNECT	• Electrical leads (remote)	• 6' Locking power cord (self-cont.) • 6' Straight blade power cord (self-cont.)
REFRIGERATION	• Remote DX refrigeration	² • Breeze w/EnergyWise s/c refrigeration • Remote w/thermostat, solenoid & TXV
SENSOR	• None	• CPC discharge air sensor (remote) • Danfoss discharge air sensor (remote)
MISCELLANEOUS		• Front glass lock • Rear door lock
ACCESSORIES		• Angled display steps (n/a w/shelf) • Clean Sweep® coil cleaner (n/a w/remote) • Drain strainer • Rear wrapping board, white Sanalite®

Option Notes: 1 - Separate circuit required
2 - N/A on 3ft, 10ft, 12ft

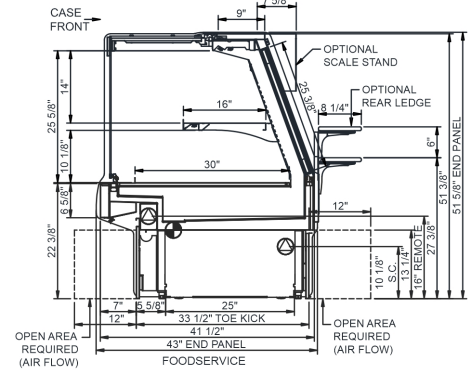
Intended Environment: Type I - Designed to operate in ambient conditions of 75°F with 55% relative humidity unless noted otherwise in system information below.

Zone	Intended Product To Be Displayed	Warmest Avg Prod Temp ° F
1	Unpackaged refrigerated products	38-40

PLAN VIEW



SIDE VIEW



NOTE: ALL DIMENSIONS APPROXIMATE

-  **ELECTRICAL JUNCTION BOX**
(SUPPLIED WITH 6" LEADS OR POWER CORD).
-  **REFRIGERATION LINE CONNECTION.**
-  **SELF-CONTAINED CASE SERVICE ACCESS AREA.**
-  **LOCATION OF DRAIN TUBE FOR REMOTE REF.**
ONLY (SUPPLIED WITH 3/4" OR 1 1/2" PVC TUBE).
-  **REMOTE FLOOR SINK & UTILITIES ACCESS AREA.**
-  **DRY CASE SERVICE ACCESS AREA.**

Model Technical Specifications

Model	L"	L1"	L2"	System Circuit Volts		Phs	Freq	Amps ***	Watts	Wires	NEMA Plug	SST	Conv. Rack BTUH	Para. Rack BTUH	Est Wt	
				Circuit #1	110-120											
GMDSV3R	36.75	39.00	3.50	Remote(Type I)	Circuit #1	110-120	1	60	1.23	81	2+G	Leads Multiple		1296	1200	950
GMDSV4R	48.75	51.00	3.50	Remote(Type I)	Circuit #1	110-120	1	60	1.70	71	2+G	Leads Multiple		1296	1200	950
				Remote(Type I)	Circuit #1	110-120	1	60	1.70	71	2+G	Leads Multiple	30.00	1296	1200	
				Remote(Type I)	Circuit #1	110-120	1	60	1.70	71	2+G	Leads Multiple	20.00	1296	1200	
				Self-Contained (R513A)	Circuit #1	110-120	1	60	10.37	802	2+G	5-15P or L5-15P	N/A	N/A	N/A	
GMDSV5R	60.63	62.88	3.50	Remote(Type I)	Circuit #1	110-120	1	60	2.63	90	2+G	Leads Multiple	20.00	1706	1580	1,150
				Self-Contained (R513A)	Circuit #1	110-120	1	60	12.00	1,063	2+G	5-15P or L5-15P	N/A	N/A	N/A	
GMDSV6R	73.13	75.38	3.50	Remote(Type I)	Circuit #1	110-120	1	60	2.29	99	2+G	Leads Multiple		2030	1880	1,250
				Remote(Type I)	Circuit #1	110-120	1	60	2.29	99	2+G	Leads Multiple	20.00	2030	1880	
				Self-Contained (R513A)	Circuit #1	110-120	1	60	14.91	1,072	2+G	5-20P or L5-20P	N/A	N/A	N/A	
GMDSV8R	97.50	99.75	3.50	Remote(Type I)	Circuit #1	110-120	1	60	3.76	149	2+G	Leads Multiple		2722	2520	1,575
				Remote(Type I)	Circuit #1	110-120	1	60	3.96	424	2+G	Leads Multiple	20.00	2722	2520	
				Remote(Type I)	Circuit #1	110-120	1	60	3.76	159	2+G	Leads Multiple	20.00	2722	2520	
				Self-Contained (R449A)	Circuit #1	110-120	1	60	15.84	1,520	2+G	5-20P or L5-20P	N/A	N/A	N/A	
GMDSV10R	121.13	123.38	40.50	Remote(Type I)	Circuit #1	110-120	1	60	6.05	576	2+G	Leads Multiple		2916	2700	1,600
				Remote(Type I)	Circuit #1	110-120	1	60	6.05	576	2+G	Leads Multiple	20.00	2916	2700	
				Remote(Type I)	Circuit #1	110-120	1	60	6.05	576	2+G	Leads Multiple	20.00	2916	2700	
GMDSV12R	146.25	148.50	45.25	Remote(Type I)	Circuit #1	110-120	1	60	4.62	540	2+G	Leads Multiple		3672	3400	1,750
				Remote(Type I)	Circuit #1	110-120	1	60	4.62	540	2+G	Leads Multiple	20.00	3672	3400	
				Remote(Type I)	Circuit #1	110-120	1	60	4.62	540	2+G	Leads Multiple	20.00	3672	3400	

*** Does not include electric defrost on freezer models.

Regulatory Approvals:

All Models
 Accordance with AHRI Std 1200
 ETL Listed to UL 471
 ETL Listed to CAN/CSA 22.2 No. 120
 ETL Sanitation to NSF/ANSI 7



In Accordance with
AHRI Std 1200

DOE 2017
 Energy Efficiency
 Compliant

Important Notes:

- Units must be shimmed during installation to ensure the unit is level and plumb.
- Compressor air rear intake, front discharge. Toe kick cannot be blocked.
- Condensate pan with self-contained refig. only.
- Remote doesn't incl Conds unit. Floor drain reqd.
- Remote only available w/rail base w/shims.

⚠ WARNING: This product can expose you to chemicals, including Urethane (Ethyl Carbamate), which are known to the State of California to cause cancer and birth defects or other reproductive harm. For more information go to www.P65Warnings.ca.gov.

